

EQ-Alarmer

01 Introducing EQ-Alarmer

- It can predict the estimated seismic intensity at the point where the device is installed by linking with the existing seismometer operated by the government institutions
- It utilizes existing seismic data without installing additional seismometer, earthquake warnings can be issued at low cost according to the installation environment, and a mobile application can be used for rapid earthquake warning transmission
- The estimated intensity algorithm has been verified by domestic seismic experts to ensure alert reliability
- To ensure the reliability of the information acquired, It displays together the API provided by the Korea Meteorological Administration
- This device receives APIs from national disaster warning agencies such as the Korea Meteorological Administration and calculates the estimated intensity of the location where the EQ alarmer is installed based on the APIs data. in case of even an earthquake event is not detected by connected seismometer, enabling early warning like an estimated intensity and arrival time of S wave through receiving API from Korea Meteorological Administration



Product Specification

Processor : Intel 9th	Alarm Output : 3-stage LED, Voice output
Core : 1.1-3.4 Ghz Dual	Algorithm : Estimated Intensity Prediction
Display : 12.5" Touch Display	P-wave earthquake pre-warning
Storage : 500 GB(SSD)	Emergency Structural Health Monitoring (Option)
Input port : Ethernet 2 Port	Contact Terminal : 2 contact point
Serial 1 Post	Power : AC 220V
USB : USB 3.0×2	Size : (D)364 (W)70 (H)320
Installation Type : Wall-mounted	Wireless Communication : WiFi , Bluetooth

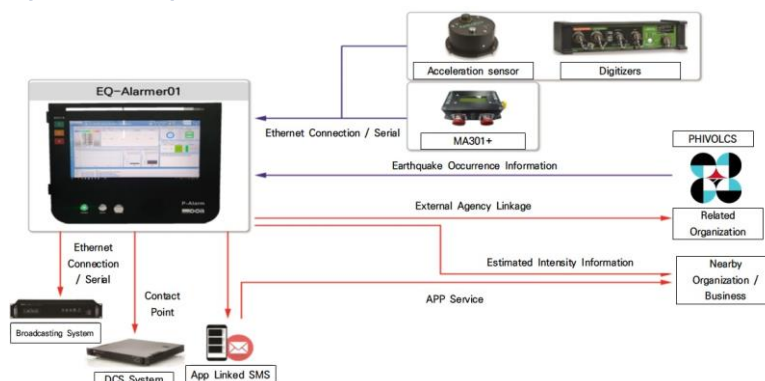
Product Features

- Real-time seismic measurement data collection and monitoring function
- Estimated intensity value of the location where this device is deployed by linking with the existing seismometer
- 3-stage alarm issuance function like " Caution, Concern, Serious"
- Real-time weather and earthquake warning information through API provided by the Korea Meteorological Administration
- Contact signal output and linkage function with in-house broadcasting system considering user convenience
- ※ In case of emergency building damage assessment function, it is provided after checking whether it is applicable depending on the environment of the installation site

Functions for installation points (optional)

- Only EQ-Alarmer01 Installed: **Estimated intensity prediction alarm, earthquake real-time alarm**
- EQ-Alarmer01 + seismometer (3) Installed : **Estimated intensity prediction alarm, P-wave pre-warning, Emergency building damage assessment, Earthquake real-time alarm**

System Configuration Diagram



EQ-Alarmer

EQ-Alarmer Use Example Diagram

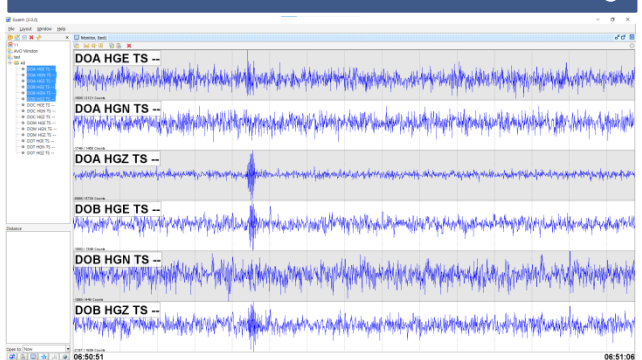


02 EQ-Alarmer Software Features

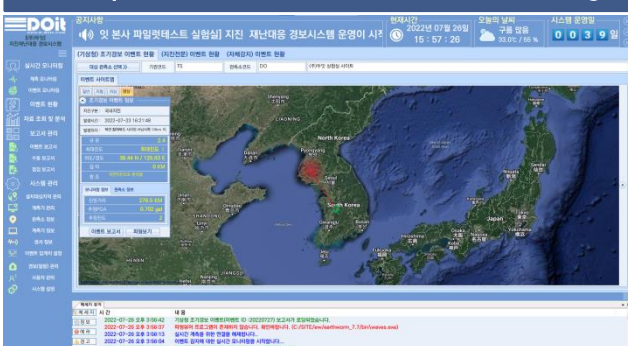
Real-time Measurement Management Monitoring



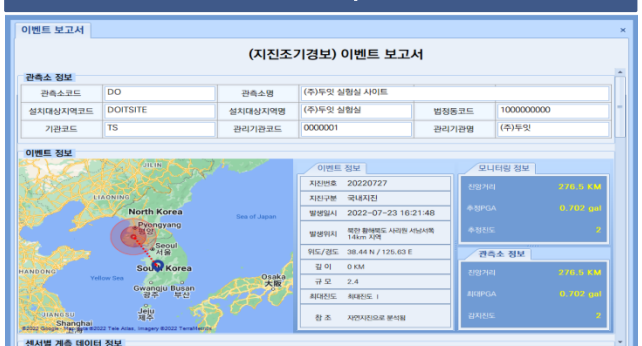
Real-time Measurement Wave Form Monitoring



Earthquake Alert Event Information Monitoring



Event Report



- Multiple surveillance with data information
- 3-stage alarm issuance based on event trigger processing
- Event results report
- Real-time monitoring/data storage and transmission/analysis
- Reception status/Event occurrence status/System status
- Estimated seismic intensity information

- ※ Implementation of Earworm and SeedLink module linkage control function for seismometer linkage
- ※ Implementation of raw data and MMA data linkage processing module
- ※ Implementation of QSCD20 data collection/storage module